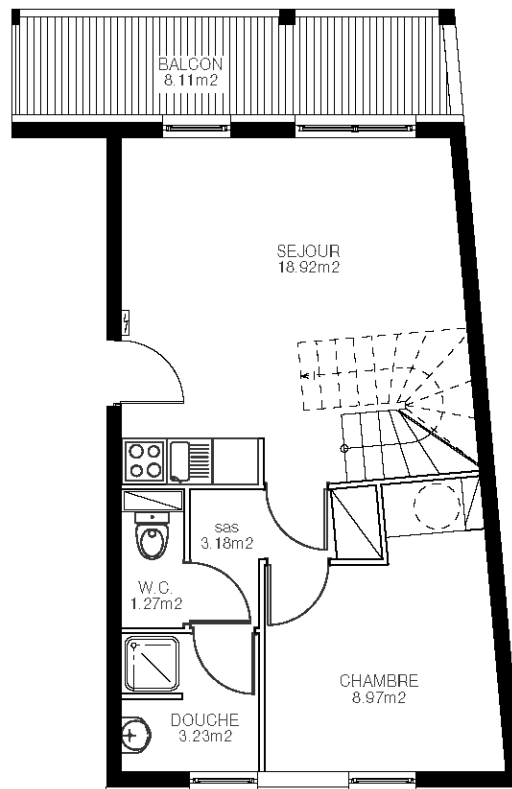
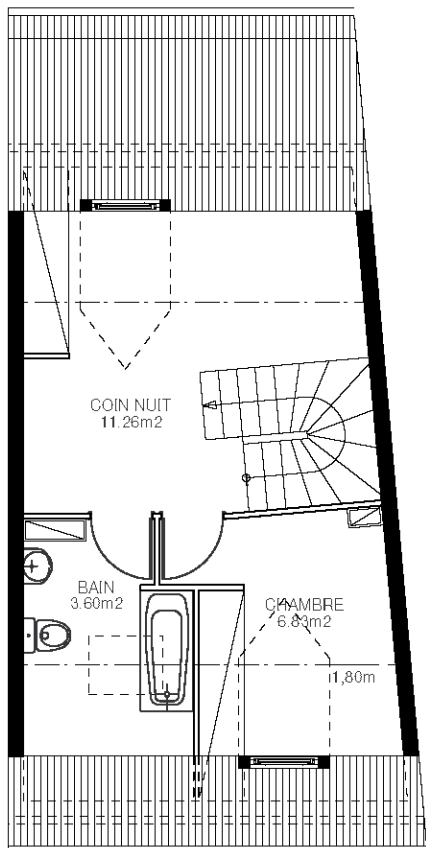


40

G40

Le Balcon de L' Yse

T4 dx - 8 lits / lot N° 40



R+1 + COMBLES

SEJOUR	18,92 m ²
CHAMBRE 1	8,97 m ²
CHAMBRE 2	6,83 m ²
COIN NUIT	11,26 m ²
SALLE DE BAINS	3,60 m ²
SALLE D'EAU	3,23 m ²
WC	1,27 m ²
DEGAGEMENT	3,18 m ²

BALCON TERRASSE 8,11 m²

SURFACE HABITABLE 57,26 m²

