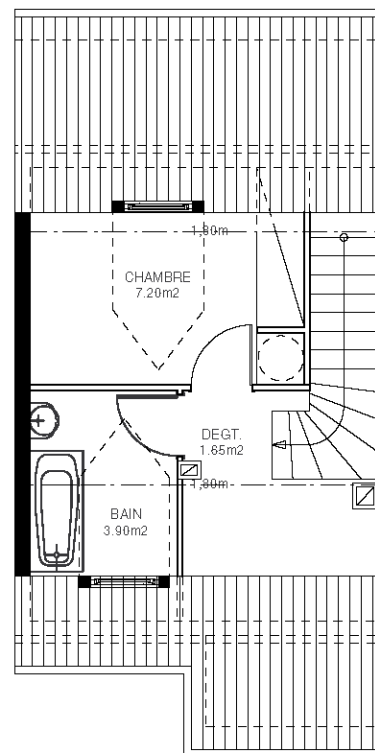
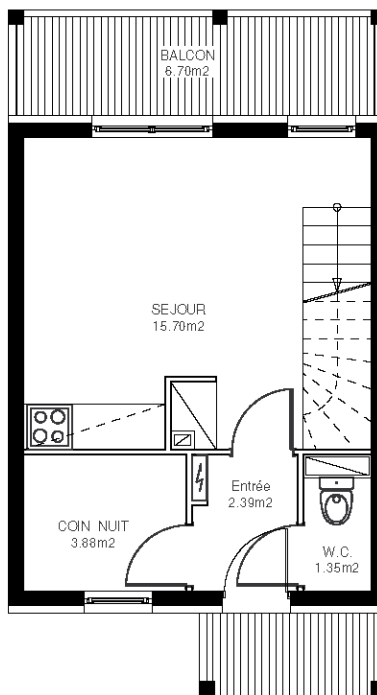


27

E₂₇

Le Balcon de L' Yse

T3 dx - 6 lits / lot N° 27



R+1 + COMBLES

SEJOUR	15,70 m ²
CHAMBRE 1	7,20 m ²
COIN NUIT	3,88 m ²
SALLE DE BAIN	3,90 m ²
WC	1,35 m ²
ENTREE	2,39 m ²
DEGAGEMENT	1,65 m ²

BALCON TERRASSE 6,70 m²

SURFACE HABITABLE 36,07 m²

